

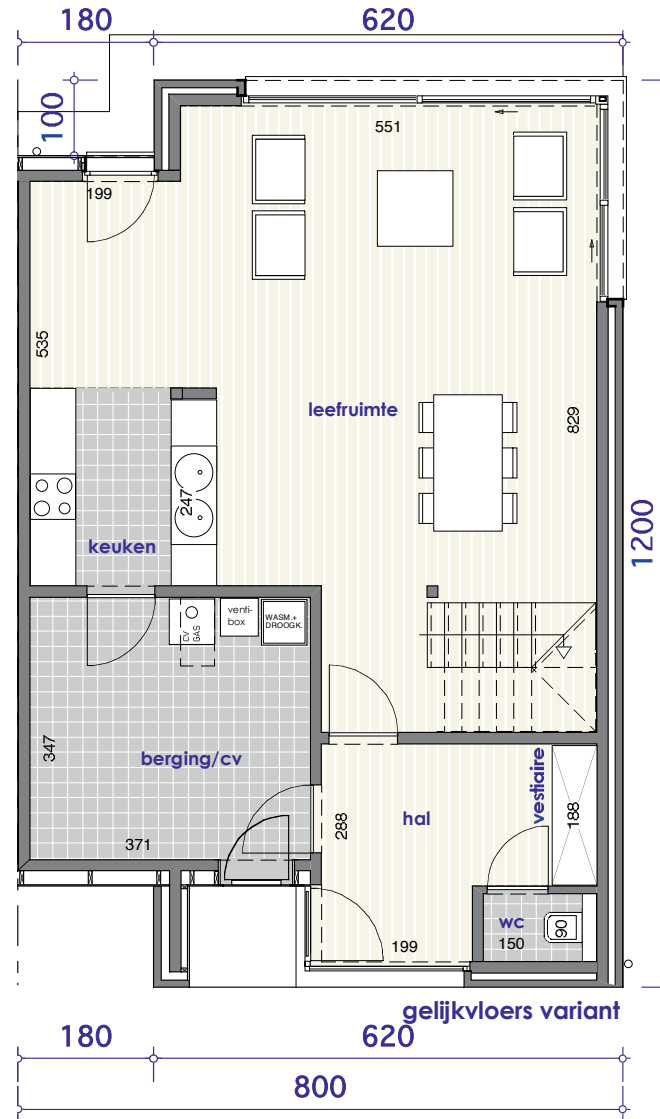
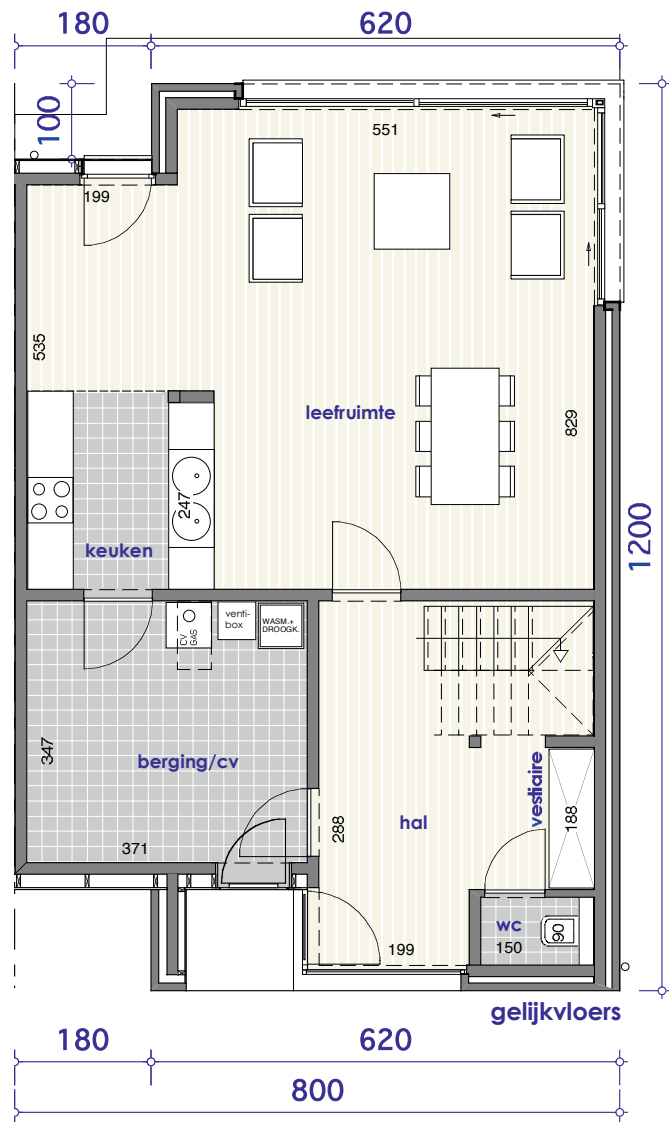
VERKAVELING DRABSTRAAT MORTSEL

woningen

MIDDENWONING :

gelijkvloers : 8.00 m x 12.00 m +
1 verdieping : 6.20 m x 12.00 m

+ garage 3.20 x 8.00 m



hoekwoning type C 8x12m + garage 3,20x8,00m

COGGHE&CO_{nv}
SOLIDE BOUWEN, DUURZAAM WONEN



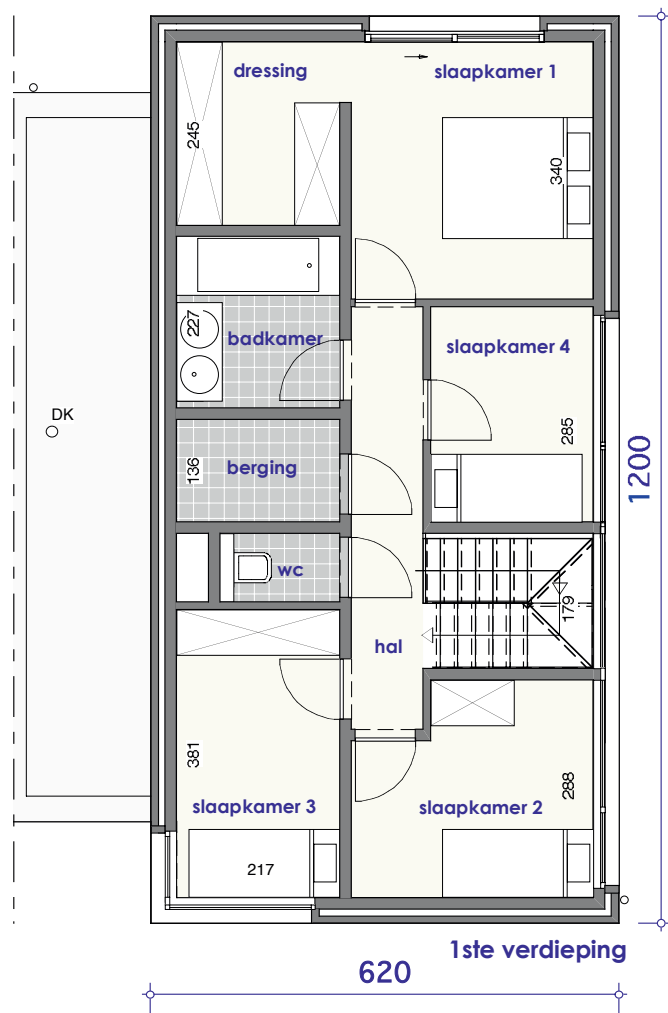
VERKAVELING DRABSTRAAT MORTSEL

woningen

MIDDENWONING :

gelijkvloers : 8.00 m x 12.00 m +
1 verdieping : 6.20 m x 12.00 m

+ garage 3.20 x 8.00 m



hoekwoning type C 8x12m + garage 3,20x8,00m

